



ACCREDU

ACCREDU AWARDS

Innovation in Law Enforcement Award



Criteria

Innovativeness:

The entry should demonstrate a unique and innovative approach to addressing a specific challenge or improving law enforcement practices. It should showcase creativity and originality in the development and implementation of the innovation.

Impact:

The entry must highlight the positive impact of the innovation on law enforcement operations, public safety, crime prevention, or community engagement. It should provide evidence of the measurable outcomes and benefits achieved as a result of the innovation.

Adaptability and Scalability:

The entry should demonstrate the potential for the innovation to be replicated, adapted, or scaled up in different law enforcement agencies or jurisdictions. It should showcase the flexibility and versatility of the innovation to address various contexts and challenges.

Collaboration:

The entry should highlight any collaborative efforts involved in the development and implementation of the innovation, such as partnerships with other agencies, academic institutions, private sector organizations, or community stakeholders. It should showcase the collective effort and synergy in bringing the innovation to fruition.

Resourcefulness:

The entry should demonstrate efficient and effective utilization of available resources, whether financial, human, or technological, in implementing the innovation. It should showcase resourcefulness in overcoming constraints and achieving impactful results.

Sustainability:

The entry should highlight the long-term sustainability of the innovation, showcasing how it can be integrated into ongoing law enforcement practices and become an integral part of the agency's operations. It should demonstrate plans or strategies for maintaining and further developing the innovation.

Documentation:

The entry should provide comprehensive documentation of the innovation, including its background, objectives, implementation process, challenges encountered, and lessons learned. It should include supporting materials, such as case studies, data, testimonials, or media coverage, to substantiate the effectiveness and impact of the innovation.

Ethical Considerations:

The entry should address any ethical considerations or safeguards associated with the innovation, ensuring that it upholds legal and ethical standards, respects individual rights, and promotes fairness and accountability.

Feasibility:

The entry should demonstrate the feasibility of implementing the innovation in real-world law enforcement settings, considering factors such as cost-effectiveness, practicality, and ease of adoption.

Entry Presentation:

The entry should be clear, concise, and well-structured, effectively conveying the innovation's significance, purpose, and achievements. It should provide a compelling case for why the innovation deserves recognition and how it stands out among other entries.

Language:

The entry must be submitted in English language.

Entry Fee:

US\$ 60-00 (only if shortlisted).



Dates

Entries Closing Date:

01 Oct 2023

Shortlist Announcement:

01 Nov 2023

AWARDS CEREMONY:

22 Dec 2023

Entry Submissions to: management@accreduawards.com
Website: www.accreduawards.com



ACCREDU AWARDS



ACCREDU

Innovation in Community Engagement Award



Criteria

Inclusivity and Diversity:
The entry should demonstrate a commitment to inclusivity and diversity, showcasing efforts to engage and involve diverse segments of the community, including underrepresented groups, marginalized communities, or minority populations.

Collaborative Partnerships:
The entry should highlight collaborative partnerships established with community organizations, non-profit groups, schools, businesses, or other stakeholders to develop and implement the community engagement innovation. It should demonstrate how these partnerships have enhanced the effectiveness and reach of the initiative.

Innovative Approach:
The entry should showcase a unique and creative approach to community engagement, demonstrating innovative strategies, initiatives, or programs that foster positive relationships, collaboration, and mutual trust between law enforcement agencies and the community.

Impact on Community:
The entry must highlight the measurable impact and positive outcomes achieved through the community engagement innovation. It should demonstrate how the innovation has improved community safety, trust, and overall quality of life.

Sustainability:
The entry should highlight the long-term sustainability of the innovation, showcasing how it can be integrated into ongoing law enforcement practices and become an integral part of the agency's operations. It should demonstrate plans or strategies for maintaining and further developing the innovation.

Documentation:
The entry should provide comprehensive documentation of the innovation, including its background, objectives, implementation process, challenges encountered, and lessons learned. It should include supporting materials, such as case studies, data, testimonials, or media coverage, to substantiate the effectiveness and impact of the innovation.

Ethical Considerations:
The entry should address any ethical considerations or safeguards associated with the innovation, ensuring that it upholds legal and ethical standards, respects individual rights, and promotes fairness and accountability.

Communication and Transparency:
The entry should showcase effective communication strategies employed to foster open and transparent dialogue with the community. It should highlight initiatives that promote clear and timely information sharing, active listening, and responsiveness to community concerns.

Language:
The entry must be submitted in English language.

Entry Fee:
US\$ 60-00 (only if shortlisted).



Dates

Entries Closing Date:

01 Oct 2023

Shortlist Announcement:

01 Nov 2023

AWARDS CEREMONY:

22 Dec 2023

Entry Submissions to: management@accreduawards.com
Website: www.accreduawards.com



ACCREDU AWARDS



ACCREDU

Innovation in Technology Award



Criteria

Creativity and Originality:

The entry should demonstrate a creative and original approach to leveraging technology, showcasing unique solutions or applications that stand out from existing practices. It should highlight the innovative concepts, design, or implementation methods employed.

Practicality and Feasibility:

The entry should demonstrate the practicality and feasibility of implementing the technological innovation within a law enforcement setting. It should consider factors such as cost-effectiveness, compatibility with existing infrastructure, ease of use, and scalability.

Collaboration and Partnerships:

The entry should highlight any collaborative efforts or partnerships involved in the development and implementation of the technological innovation. It should showcase the collective expertise and cooperation between law enforcement agencies, technology providers, research institutions, or other stakeholders.

Adaptability and Future Potential:

The entry should demonstrate the adaptability and potential for future development or expansion of the technological innovation. It should showcase how the innovation can be applied in different contexts, address emerging challenges, or be scaled up for wider implementation.

Documentation and Validation:

The entry should provide comprehensive documentation of the technological innovation, including its purpose, development process, implementation strategy, and outcomes. It should include supporting materials, such as data, case studies, testimonials, or expert opinions, to validate the effectiveness and impact of the innovation.

Ethical Considerations and Data Privacy:

The entry should address any ethical considerations or safeguards associated with the technological innovation, ensuring compliance with legal and ethical standards, data privacy regulations, and protection of individual rights.

Sustainability and Maintenance:

The entry should showcase plans or strategies for the sustainability and maintenance of the technological innovation over time. It should consider factors such as software updates, technical support, training, and long-term viability.

Entry Presentation:

The entry should be clear, concise, and well-presented, effectively communicating the technological innovation's significance, purpose, and achievements. It should provide a compelling case for why the innovation deserves recognition and how it contributes to advancing technology in law enforcement.

Language:

The entry must be submitted in English language.

Entry Fee:

US\$ 60-00 (only if shortlisted).



Dates

Entries Closing Date:

01 Oct 2023

Shortlist Announcement:

01 Nov 2023

AWARDS CEREMONY:

22 Dec 2023

Entry Submissions to: management@accreduawards.com

Website: www.accreduawards.com



ACCREDU AWARDS



ACCREDU

Innovation in Officers Safety & Wellness Award



Criteria

Innovative Approaches:

The entry should highlight innovative approaches and strategies employed to ensure officer safety and promote wellness. This can include the adoption of new technologies, specialized training, mental health support, peer support programs, or other initiatives that prioritize officer well-being.

Collaboration and Partnerships:

The entry should showcase collaborative efforts and partnerships with external organizations, such as healthcare providers, mental health professionals, wellness experts, or community stakeholders, to enhance the officer safety and wellness program.

Education and Training:

The entry should demonstrate a commitment to ongoing education and training initiatives that equip officers with the necessary skills and knowledge to navigate challenging situations, manage stress, promote resilience, and prioritize their well-being.

Data and Evaluation:

The entry should showcase the use of data-driven approaches to monitor and evaluate the effectiveness of the officer safety and wellness program. It should provide evidence of data collection, analysis, and program adjustments based on the insights gained.

Supportive Policies and Procedures:

The entry should demonstrate the implementation of supportive policies and procedures that prioritize officer safety and wellness, including appropriate staffing levels, adequate resources, clear guidelines, and protocols for managing critical incidents.

Officer Feedback and Engagement:

The entry should highlight efforts to engage officers in the development and implementation of the safety and wellness program. It should showcase mechanisms for collecting officer feedback, incorporating their perspectives, and fostering a culture of open communication.

Community Impact:

The entry should demonstrate how the officer safety and wellness program has positively influenced the relationship between law enforcement and the community. It should highlight community outreach efforts, public education campaigns, or initiatives that promote trust, collaboration, and mutual support.

Documentation and Supporting Materials:

The entry should provide comprehensive documentation of the officer safety and wellness program, including its objectives, strategies, implementation process, outcomes, and testimonials from officers. It should include supporting materials, such as program materials, success stories, case studies, or media coverage, to substantiate the effectiveness and impact of the program.

Language:

The entry must be submitted in English language.

Entry Fee:

US\$ 60-00 (only if shortlisted).



Dates

Entries Closing Date:

01 Oct 2023

Shortlist Announcement:

01 Nov 2023

AWARDS CEREMONY:

22 Dec 2023

Entry Submissions to: management@accreduawards.com

Website: www.accreduawards.com



ACCREDU AWARDS



ACCREDU

Innovation in Crisis Response and Emergency Preparedness Award



Criteria

Preparedness and Planning:
The entry should showcase proactive measures taken to ensure preparedness and readiness for crisis situations. It should highlight the development and implementation of comprehensive emergency response plans, training programs, and drills to enhance response capabilities.

Collaboration and Partnerships:
The entry should demonstrate successful collaboration and partnerships between relevant agencies, organizations, and stakeholders involved in the crisis response. It should showcase effective communication, coordination, and resource-sharing among the different entities.

Innovation and Adaptability:
The entry should demonstrate innovative approaches or technologies utilized during the crisis response, showcasing adaptability and agility in addressing unforeseen challenges or changing circumstances. It should highlight the use of cutting-edge tools, strategies, or practices to enhance response effectiveness.

Timeliness and Efficiency:
The entry should showcase a prompt and efficient response to the crisis, minimizing the impact and ensuring a rapid return to normalcy. It should demonstrate effective resource allocation, incident command, and decision-making processes that expedited the response efforts.

Stakeholder Engagement and Support:
The entry should demonstrate effective engagement with affected communities, ensuring their involvement, support, and access to vital information during the crisis. It should showcase efforts to address the needs and concerns of stakeholders, including residents, businesses, or other relevant groups.

Documentation and Evaluation:
The entry should provide comprehensive documentation of the crisis response, including the initial situation assessment, response strategies, actions taken, and outcomes achieved. It should demonstrate the use of evaluation processes to assess the effectiveness of the response efforts and identify areas for improvement.

Lessons Learned and Continuous Improvement:
The entry should showcase the application of lessons learned from previous crisis situations, demonstrating a commitment to continuous improvement. It should highlight efforts to analyze post-incident evaluations, implement corrective actions, and enhance future crisis response capabilities.

Entry Presentation:
The entry should be well-presented, clearly articulating the significance of the crisis response and emergency efforts. It should provide a compelling case for why the response deserves recognition and how it exemplifies excellence in crisis management.

Language:
The entry must be submitted in English language.

Entry Fee:
US\$ 60-00 (only if shortlisted).



Dates

Entries Closing Date:

01 Oct 2023

Shortlist Announcement:

01 Nov 2023

AWARDS CEREMONY:

22 Dec 2023

Entry Submissions to: management@accreduawards.com
Website: www.accreduawards.com



ACCREDU

ACCREDU AWARDS

Police Operations Excellence in Crime Prevention Award



Criteria

Crime Prevention Strategies:

The entry should showcase effective and innovative crime prevention strategies implemented by a law enforcement agency. It should highlight initiatives that focus on proactive measures to reduce crime rates, deter criminal activities, and enhance community safety.

Impact on Crime Reduction:

The entry must demonstrate the measurable impact and positive outcomes achieved through the crime prevention strategies. It should provide evidence of reduced crime rates, improved public safety, and enhanced quality of life in the communities served by the law enforcement agency.

Collaboration and Partnerships:

The entry should demonstrate successful collaboration and partnerships with community organizations, businesses, local government entities, and other stakeholders to implement crime prevention initiatives. It should showcase how these partnerships have strengthened the effectiveness and reach of crime prevention efforts.

Data-Driven Approaches:

The entry should highlight the use of data and analytics to identify crime hotspots, patterns, and trends, enabling the development of targeted crime prevention strategies. It should showcase how data analysis and intelligence have informed resource allocation, deployment strategies, and crime prevention interventions.

Community Engagement and Empowerment:

The entry should demonstrate efforts to actively engage the community in crime prevention initiatives, empowering residents to play an active role in identifying and addressing local crime concerns. It should showcase initiatives that foster trust, cooperation, and information sharing between the community and law enforcement agency.

Education and Awareness Programs:

The entry should highlight educational campaigns and awareness programs aimed at increasing public knowledge about crime prevention, personal safety, and security measures. It should demonstrate efforts to empower individuals and organizations with the necessary skills and information to protect themselves and their communities.

Evaluation and Continuous Improvement:

The entry should showcase the use of evaluation processes to assess the effectiveness of crime prevention strategies and programs. It should demonstrate a commitment to continuous improvement by analyzing outcomes, identifying lessons learned, and making adjustments to enhance future crime prevention efforts.

Sustainability and Long-Term Impact:

The entry should demonstrate the sustainability and long-term impact of the crime prevention initiatives. It should showcase plans or strategies for maintaining and expanding crime prevention efforts beyond the initial implementation phase, ensuring lasting results in reducing crime rates.

Documentation and Supporting Materials:

The entry should provide comprehensive documentation of the crime prevention strategies, including their objectives, implementation methods, outcomes, and testimonials from community members. It should include supporting materials, such as data reports, success stories, community feedback, or media coverage, to substantiate the effectiveness and impact of the crime prevention initiatives.

Entry Presentation:

The entry should be well-presented, effectively communicating the significance of the crime prevention strategies and their impact on crime reduction. It should provide a compelling case for why the efforts deserve recognition and how they exemplify excellence in police operations for crime prevention.

Language:

The entry must be submitted in English language.

Entry Fee:

US\$ 60-00 (only if shortlisted).



Dates

Entries Closing Date:

01 Oct 2023

Shortlist Announcement:

01 Nov 2023

AWARDS CEREMONY:

22 Dec 2023

Entry Submissions to: management@accreduawards.com

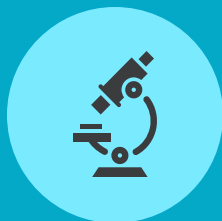
Website: www.accreduawards.com



ACCREDU

ACCREDU AWARDS

Police Operations Outstanding Investigative Achievement Award



Criteria

Investigative Excellence:
The entry should showcase exceptional investigative skills, techniques, and strategies employed by a law enforcement agency to solve complex cases and bring criminals to justice. It should highlight cases that demonstrate a high level of investigative excellence and professionalism.

Impact and Results:
The entry must demonstrate the significant impact and positive outcomes achieved through the investigative efforts. It should provide evidence of successful case resolutions, significant arrests, the recovery of stolen property, dismantling criminal networks, or other notable achievements resulting from the investigations.

Complexity and Challenge:
The entry should showcase investigations that involved complex factors, challenging circumstances, or sophisticated criminal activities. It should highlight the level of difficulty and the exceptional investigative approach employed to overcome these challenges and achieve successful outcomes.

Collaboration and Partnerships:
The entry should demonstrate successful collaboration and partnerships with other law enforcement agencies, forensic experts, legal professionals, or other relevant entities. It should showcase how these collaborations enhanced the investigative capabilities, resources, and expertise available to the investigating team.

Use of Technology and Forensic Science:
The entry should highlight the innovative use of technology, digital forensics, or other scientific advancements in the investigative process. It should showcase how these tools and techniques played a crucial role in gathering evidence, analyzing data, or reconstructing crime scenes, leading to successful outcomes.

Adherence to Legal and Ethical Standards:
The entry should demonstrate a strong commitment to upholding legal and ethical standards throughout the investigative process. It should showcase adherence to proper evidence collection, preservation, and handling procedures, as well as maintaining the rights and dignity of all individuals involved.

Collaboration with the Community:
The entry should demonstrate effective collaboration with the community, including engaging witnesses, gathering community intelligence, or seeking public assistance in solving cases. It should showcase efforts to build trust, foster cooperation, and leverage community resources to enhance the investigative process.

Innovative Techniques and Strategies:
The entry should highlight the use of innovative investigative techniques or strategies that contributed to the success of the investigations. It can include undercover operations, surveillance methods, intelligence gathering, or other innovative approaches that demonstrated exceptional problem-solving and decision-making skills.

Training and Professional Development:
The entry should showcase the agency's commitment to training and professional development of its investigative personnel. It should highlight initiatives that enhance investigators' skills, knowledge, and proficiency in applying best practices, new methodologies, or specialized investigative techniques.

Documentation and Supporting Materials:
The entry should provide comprehensive documentation of the investigative cases, including the nature of the crime, investigative challenges faced, methods employed, outcomes achieved, and recognition received from other agencies or organizations. It should include supporting materials, such as case files, testimonies, commendations, or media coverage, to substantiate the outstanding investigative achievements.

Language:
The entry must be submitted in English language.

Entry Fee:
US\$ 60-00 (only if shortlisted).



Dates

Entries Closing Date:

01 Oct 2023

Shortlist Announcement:

01 Nov 2023

AWARDS CEREMONY:

22 Dec 2023

Entry Submissions to: management@accreduawards.com
Website: www.accreduawards.com



ACCREDU

ACCREDU AWARDS

Police Operations Traffic Safety Innovation Award



Criteria

Innovative Traffic Safety Strategies:

The entry should showcase innovative approaches, strategies, or programs implemented by a law enforcement agency to improve traffic safety and reduce accidents, injuries, and fatalities on the roads.

Impact and Results:

The entry must demonstrate the measurable impact and positive outcomes achieved through the implementation of traffic safety innovations. It should provide evidence of reduced traffic violations, improved compliance with traffic laws, decreased crash rates, or other significant results related to traffic safety.

Originality and Creativity:

The entry should highlight the originality and creativity of the traffic safety innovations. It should showcase unique and inventive solutions that address specific traffic safety challenges, demonstrate out-of-the-box thinking, and offer novel approaches to improve road safety.

Collaboration and Partnerships:

The entry should demonstrate successful collaboration and partnerships with transportation agencies, engineering firms, educational institutions, community organizations, or other stakeholders. It should showcase how these collaborations have contributed to the development and implementation of the traffic safety innovations.

Use of Technology and Data:

The entry should highlight the effective use of technology and data in enhancing traffic safety efforts. It should showcase the use of advanced tools, systems, or data analysis techniques to identify high-risk areas, implement targeted interventions, or improve traffic enforcement strategies.

Education and Public Awareness:

The entry should showcase educational campaigns, public awareness initiatives, or community outreach programs aimed at promoting traffic safety. It should demonstrate efforts to educate the public about safe driving practices, raise awareness about the consequences of reckless driving, or encourage responsible behavior on the roads.

Evaluation and Continuous Improvement:

The entry should demonstrate a commitment to evaluation and continuous improvement of traffic safety innovations. It should showcase the use of data analysis, feedback mechanisms, or performance metrics to assess the effectiveness of the innovations and make adjustments for ongoing improvement.

Sustainability and Scalability:

The entry should demonstrate the sustainability and potential scalability of the traffic safety innovations. It should showcase plans or strategies for long-term implementation, resource allocation, and expansion of the innovations to ensure a lasting impact on traffic safety.

Stakeholder Engagement:

The entry should demonstrate effective engagement with stakeholders, including community members, road users, local businesses, or other relevant groups. It should showcase efforts to involve stakeholders in the development and implementation of traffic safety innovations, seeking their input, and addressing their concerns.

Documentation and Supporting Materials:

The entry should provide comprehensive documentation of the traffic safety innovations, including their objectives, implementation methods, outcomes, and testimonials from stakeholders. It should include supporting materials, such as data reports, success stories, media coverage, or recognition received, to substantiate the effectiveness and impact of the traffic safety innovations.

Language:

The entry must be submitted in English language.

Entry Fee:

US\$ 60-00 (only if shortlisted).



Dates

Entries Closing Date:

01 Oct 2023

Shortlist Announcement:

01 Nov 2023

AWARDS CEREMONY:

22 Dec 2023

Entry Submissions to: management@accreduawards.com

Website: www.accreduawards.com



ACCREDU

ACCREDU AWARDS

Police Operations Excellence in Emergency Response Award



Criteria

Effective Emergency Response:

The entry should showcase exceptional emergency response efforts by a law enforcement agency in critical situations such as natural disasters, terrorist incidents, major accidents, or other emergencies. It should demonstrate the agency's ability to efficiently coordinate and manage emergency response operations.

Timeliness and Efficiency:

The entry must demonstrate the timeliness and efficiency of the emergency response efforts. It should provide evidence of quick mobilization, effective communication, and rapid deployment of resources to mitigate the emergency, protect lives, and minimize further harm or damage.

Collaboration and Interagency Cooperation:

The entry should demonstrate successful collaboration and cooperation with other emergency response agencies, including fire departments, medical services, rescue teams, or other relevant entities. It should showcase how joint efforts and coordination enhanced the effectiveness and outcomes of emergency response operations.

Crisis Management and Decision Making:

The entry should highlight effective crisis management and decision-making processes during the emergency response. It should showcase the agency's ability to assess the situation, prioritize actions, allocate resources, and adapt strategies in real-time to address evolving challenges and ensure public safety.

Evaluation and Lessons Learned:

The entry should showcase the agency's commitment to post-incident evaluation and continuous improvement. It should demonstrate how feedback, lessons learned, and best practices from previous emergency responses have been incorporated into future planning and response strategies.

Training and Preparedness:

The entry should showcase the agency's commitment to training and preparedness for emergency response. It should highlight initiatives that enhance personnel's skills, knowledge, and readiness to handle various emergency scenarios, including simulation exercises, drills, or specialized training programs.

Communication and Information Sharing:

The entry should demonstrate effective communication and information sharing practices during the emergency response. It should showcase how the agency utilized various communication channels, technology, or information management systems to ensure clear and timely communication among responders, stakeholders, and the public.

Care for Victims and Public Safety:

The entry should highlight the agency's commitment to the care and well-being of victims affected by the emergency. It should demonstrate efforts to provide immediate assistance, support services, and ensure the safety and security of the affected individuals and communities.

Documentation and Supporting Materials:

The entry should provide comprehensive documentation of the emergency response operations, including incident reports, response plans, operational procedures, and testimonials from stakeholders or community members. It should include supporting materials such as media coverage, commendations, or recognition received to substantiate the excellence in emergency response.

Entry Presentation:

The entry should be well-presented, effectively communicating the agency's exceptional emergency response capabilities, outcomes, and its impact on public safety. It should provide a compelling case for why the agency deserves recognition for excellence in emergency response operations.

Language:

The entry must be submitted in English language.

Entry Fee:

US\$ 60-00 (only if shortlisted).



Dates

Entries Closing Date:

01 Oct 2023

Shortlist Announcement:

01 Nov 2023

AWARDS CEREMONY:

22 Dec 2023

Entry Submissions to: management@accreduawards.com

Website: www.accreduawards.com



ACCREDU

ACCREDU AWARDS

Police Operations Excellence in Protective Security Award



Criteria

Effective Protective Security Measures:

The entry should showcase the implementation of effective protective security measures by a law enforcement agency to safeguard critical infrastructure, public events, VIPs, or other high-value targets. It should demonstrate the agency's ability to assess risks, develop security plans, and execute protective security operations with excellence.

Threat Assessment and Risk Management:

The entry must demonstrate a comprehensive understanding of threats and risks associated with the protected entities or events. It should showcase the agency's capability to conduct thorough threat assessments, analyze vulnerabilities, and develop risk management strategies tailored to specific security needs.

Planning and Preparedness:

The entry should highlight the agency's meticulous planning and preparedness efforts in protective security operations. It should showcase the development of detailed operational plans, contingency plans, and the establishment of command and control structures to ensure a proactive and coordinated response to security threats.

Physical Security Measures:

The entry should demonstrate the agency's implementation of effective physical security measures to deter, detect, and respond to potential security breaches. It should showcase the deployment of advanced surveillance systems, access control mechanisms, security barriers, or other relevant technologies to protect the designated assets.

Personnel Training and Competence:

The entry should showcase the agency's commitment to training and developing its personnel in protective security operations. It should demonstrate the competence and professionalism of the security personnel, including specialized training in areas such as threat assessment, emergency response, crisis management, or crowd control.

Collaboration and Information Sharing:

The entry should demonstrate successful collaboration and information sharing practices with relevant stakeholders, such as private security firms, intelligence agencies, government entities, or community partners. It should showcase how these collaborations enhance the agency's protective security capabilities and strengthen the overall security posture.

Proactive Intelligence and Threat Monitoring:

The entry should showcase the agency's proactive approach to gathering intelligence, monitoring threats, and staying ahead of potential security risks. It should demonstrate the agency's ability to analyze and act upon intelligence information effectively, leading to the prevention or mitigation of security incidents.

Incident Response and Crisis Management:

The entry should highlight the agency's ability to respond swiftly and effectively to security incidents or crises. It should showcase the agency's crisis management strategies, incident response protocols, and coordination with relevant stakeholders to ensure a timely and efficient resolution of security-related events.

Continuous Improvement and Innovation:

The entry should demonstrate the agency's commitment to continuous improvement and innovation in protective security operations. It should highlight initiatives or programs that leverage new technologies, best practices, or lessons learned from previous incidents to enhance the agency's protective security capabilities.

Documentation and Supporting Materials:

The entry should provide comprehensive documentation of the agency's protective security operations, including security plans, incident reports, training records, and testimonials from stakeholders or clients. It should include supporting materials such as commendations, awards, or recognition received to substantiate the excellence in protective security operations.

Language:

The entry must be submitted in English language.

Entry Fee:

US\$ 60-00 (only if shortlisted).



Dates

Entries Closing Date:

01 Oct 2023

Shortlist Announcement:

01 Nov 2023

AWARDS CEREMONY:

22 Dec 2023

Entry Submissions to: management@accreduawards.com

Website: www.accreduawards.com



ACCREDU

ACCREDU AWARDS

Experts, Consultants & Advisors Excellence in Training Award



Criteria

Training Expertise and Experience:

The entry should showcase the expertise and experience of the individual or organization in the field of training, consultancy, and advisory services. It should demonstrate a deep understanding of training methodologies, adult learning principles, and the ability to design and deliver effective training programs.

Client Success Stories and Testimonials:

The entry must provide evidence of successful training engagements and positive outcomes for clients. It should showcase testimonials or case studies from satisfied clients who have benefited from the training services, highlighting the impact on individual and organizational performance.

Training Program Design and Development:

The entry should highlight the ability to design and develop comprehensive and tailored training programs that meet the specific needs of clients. It should demonstrate a systematic approach to needs assessment, curriculum design, instructional material development, and training evaluation.

Training Delivery and Facilitation Skills:

The entry should showcase exceptional training delivery and facilitation skills. It should demonstrate the ability to engage participants, create an interactive learning environment, and effectively transfer knowledge and skills to learners.

Training Innovation and Adaptability:

The entry should highlight innovative approaches and adaptability in training practices. It should showcase the use of technology, interactive learning tools, gamification, or other creative methods to enhance learner engagement and improve training outcomes.

Continuous Professional Development:

The entry should demonstrate a commitment to continuous professional development and staying up-to-date with the latest trends and best practices in training. It should showcase participation in relevant training conferences, certifications, or ongoing education programs to enhance expertise and knowledge.

Client Relationship Management:

The entry should highlight effective client relationship management practices. It should demonstrate the ability to understand client needs, maintain regular communication, and provide ongoing support and follow-up to ensure client satisfaction throughout the training engagement.

Training Impact and Evaluation:

The entry must demonstrate the ability to measure and evaluate the impact of training programs. It should showcase the use of evaluation tools, participant feedback, performance metrics, or other assessment methods to assess the effectiveness and ROI of the training services.

Industry Recognition and Awards:

The entry can include industry recognition, awards, or accolades received for excellence in training. It should showcase external validation and acknowledgment of the individual or organization's expertise, quality of training programs, and contributions to the field.

Documentation and Supporting Materials:

The entry should provide comprehensive documentation of training programs, including program outlines, training materials, participant feedback, success stories, and client testimonials. It should include supporting materials such as training videos, sample deliverables, or any other relevant resources that showcase the excellence in training services.

Eligibility:

Only officially appointed experts, consultants or advisors can enter.

Language:

The entry must be submitted in English language.

Entry Fee:

US\$ 60-00 (only if shortlisted).



Dates

Entries Closing Date:

01 Oct 2023

Shortlist Announcement:

01 Nov 2023

AWARDS CEREMONY:

22 Dec 2023

Entry Submissions to: management@accreduawards.com

Website: www.accreduawards.com



ACCREDU AWARDS

Experts, Consultants & Advisors

Outstanding Consultancy Achievement Award

ACCREDU



Criteria

Consulting Expertise and Experience:

The entry should showcase the expertise and experience of the individual or consultancy firm in providing exceptional consulting services. It should demonstrate a track record of successfully addressing complex business challenges, delivering innovative solutions, and achieving significant client outcomes.

Client Success Stories and Testimonials:

The entry must provide evidence of successful consultancy engagements and positive outcomes for clients. It should showcase testimonials or case studies from satisfied clients who have benefited from the consultancy services, highlighting the impact on their business performance, growth, or transformation.

Problem Solving and Strategic Thinking:

The entry should highlight the ability to identify and analyze critical business issues and develop strategic solutions. It should demonstrate the consultancy's capability to provide valuable insights, strategic recommendations, and actionable plans that address client needs and contribute to their long-term success.

Customization and Tailored Solutions:

The entry should demonstrate the ability to customize consultancy services and solutions to meet the specific needs of each client. It should showcase the consultancy's capacity to understand client objectives, industry dynamics, and organizational context, resulting in tailored and effective recommendations.

Collaboration and Client Engagement:

The entry should showcase effective collaboration and engagement with clients throughout the consultancy engagement. It should demonstrate strong communication skills, active listening, and the ability to build strong relationships with clients, fostering trust, and ensuring a deep understanding of their needs and aspirations.

Industry Knowledge and Thought Leadership:

The entry should highlight the consultancy's industry knowledge and thought leadership. It should demonstrate a deep understanding of market trends, emerging challenges, and best practices, as well as the ability to provide innovative insights and guidance to clients.

Project Management and Execution:

The entry should showcase excellent project management capabilities in consultancy engagements. It should demonstrate the ability to define project scopes, manage resources, timelines, and budgets effectively, ensuring successful project execution and client satisfaction.

Continuous Learning and Improvement:

The entry should demonstrate a commitment to continuous learning and improvement in consultancy practices. It should showcase initiatives such as professional development programs, training, certifications, or knowledge sharing activities that enhance the consultancy's expertise and capabilities.

Client Impact and Results:

The entry must provide evidence of the impact created by the consultancy services. It should showcase tangible outcomes, such as revenue growth, cost savings, process improvements, market expansion, or other measurable benefits that resulted from the consultancy's recommendations and interventions.

Documentation and Supporting Materials:

The entry should provide comprehensive documentation of consultancy projects, including project summaries, methodologies used, deliverables, client feedback, success stories, and any other relevant resources that substantiate the outstanding consultancy achievements.

Eligibility:

Only officially appointed experts, consultants or advisors can enter.

Language:

The entry must be submitted in English language.

Entry Fee:

US\$ 60-00 (only if shortlisted).



Dates

Entries Closing Date:

01 Oct 2023

Shortlist Announcement:

01 Nov 2023

AWARDS CEREMONY:

22 Dec 2023

Entry Submissions to: management@accreduawards.com
Website: www.accreduawards.com



ACCREDU AWARDS



Experts, Consultants & Advisors

Special Operations Achievement Award

ACCREDU



Criteria

Special Operations Expertise and Experience:

The entry should showcase the expertise and experience of the individual or consultancy firm in the field of special operations. It should demonstrate a deep understanding of specialized tactics, techniques, and procedures employed in high-risk and complex operational environments.

Impactful Special Operations Engagements:

The entry must provide evidence of successful special operations engagements and their impact on client outcomes. It should showcase specific missions, projects, or assignments where the individual or consultancy made a significant difference, achieved operational objectives, and contributed to the overall success of the mission.

Operational Planning and Execution:

The entry should highlight exceptional operational planning and execution capabilities. It should demonstrate the ability to analyze operational requirements, develop comprehensive plans, coordinate resources, and execute special operations effectively, ensuring the achievement of desired outcomes within specified parameters.

Risk Management and Mitigation:

The entry must demonstrate a systematic approach to risk management and mitigation in special operations. It should showcase the ability to assess and mitigate operational risks, implement robust safety measures, and make informed decisions to ensure the safety and security of personnel and assets involved in the operations.

Operational Readiness and Preparedness:

The entry should demonstrate a high level of operational readiness and preparedness in special operations. It should showcase a robust command structure, operational procedures, equipment readiness, and the ability to rapidly respond to emerging threats or changing operational requirements.

Collaboration and Teamwork:

The entry should demonstrate effective collaboration and teamwork in special operations. It should showcase the ability to work seamlessly with internal and external stakeholders, including other specialized units, law enforcement agencies, or military personnel, to achieve shared objectives and ensure operational success.

Innovation and Adaptability:

The entry should highlight innovative approaches and adaptability in special operations. It should showcase the use of cutting-edge technologies, unconventional tactics, or creative problem-solving to overcome operational challenges and achieve mission success.

Training and Professional Development:

The entry should demonstrate a commitment to training and professional development in the field of special operations. It should showcase participation in specialized training programs, certifications, or ongoing education to enhance skills, knowledge, and operational effectiveness.

Client Testimonials and Recognition:

The entry should include testimonials or references from clients who have directly benefited from the special operations expertise and services provided by the individual or consultancy. It can also highlight any industry recognition, awards, or commendations received for outstanding performance in special operations.

Documentation and Supporting Materials:

The entry should provide comprehensive documentation of special operations engagements, including mission reports, after-action reviews, operational plans, risk assessments, client feedback, and any other relevant supporting materials that validate the achievements and impact of the special operations conducted.

Eligibility:

Only officially appointed experts, consultants or advisors can enter.

Language:

The entry must be submitted in English language.

Entry Fee:

US\$ 60-00 (only if shortlisted).



Dates

Entries Closing Date:

01 Oct 2023

Shortlist Announcement:

01 Nov 2023

AWARDS CEREMONY:

22 Dec 2023

Entry Submissions to: management@accreduawards.com

Website: www.accreduawards.com



ACCREDU

ACCREDU AWARDS

Experts, Consultants & Advisors K-9 Excellence Award



Criteria

K-9 Training and Development:
The entry should highlight the commitment to K-9 training and development. It should demonstrate the use of proven training methods, expertise in K-9 behavior, obedience, and specialized skills such as tracking, detection, patrol, or search and rescue.

K-9 Health and Welfare:
The entry must demonstrate a commitment to ensuring the health, welfare, and overall well-being of K-9s under their care. It should showcase best practices in K-9 nutrition, medical care, conditioning, and the implementation of policies and procedures to maintain the physical and mental fitness of the K-9 teams.

Collaboration and Teamwork:
The entry should demonstrate effective collaboration and teamwork between the K-9 handlers, trainers, and other law enforcement or security personnel. It should showcase how the integration of K-9 capabilities within a larger operational context enhances overall effectiveness and mission success.

Innovation and Adaptability:
The entry should highlight innovative approaches and adaptability in K-9 operations. It can include the use of new technologies, specialized equipment, or the development of unique training techniques that improve K-9 performance, efficiency, and effectiveness in fulfilling operational objectives.

Demonstrated Results and Impact:
The entry must provide evidence of the impact created by the K-9 teams or consultancy services. It should showcase tangible outcomes.

Client Testimonials and Recognition:
The entry should include testimonials or references from clients who have directly benefited from the K-9 expertise and services provided by the individual or consultancy. It can also highlight any industry recognition, awards, or commendations received for outstanding performance in K-9 operations.

Documentation and Supporting Materials:
The entry should provide comprehensive documentation of K-9 operations, including mission reports, training records, success stories, client feedback, and any other relevant supporting materials that validate the achievements and impact of the K-9 deployments or consultancy services.

Eligibility:
Only officially appointed experts, consultants or advisors can enter.

Language:
The entry must be submitted in English language.

Entry Fee:
US\$ 60-00 (only if shortlisted).



Dates

Entries Closing Date:

01 Oct 2023

Shortlist Announcement:

01 Nov 2023

AWARDS CEREMONY:

22 Dec 2023

Entry Submissions to: management@accreduawards.com
Website: www.accreduawards.com



ACCREDU

ACCREDU AWARDS

Experts, Consultants & Advisors Innovation in Policing Award



Criteria

Innovative Approach:

The entry should showcase a unique and innovative approach to addressing challenges in the field of policing. It should demonstrate the development or implementation of groundbreaking strategies, technologies, or methodologies that have significantly improved policing operations, efficiency, or outcomes.

Impact and Results:

The entry must provide evidence of the impact created by the innovation on policing practices and outcomes. It should showcase measurable results, such as crime reduction, improved community relations, enhanced officer safety, cost savings, or other positive impacts that can be attributed to the innovation.

Collaboration and Partnerships:

The entry should highlight successful collaborations or partnerships between the individual or consultancy and law enforcement agencies, community organizations, academic institutions, or other relevant stakeholders. It should demonstrate how these collaborations have facilitated the development and implementation of the innovative solution.

Scalability and Replicability:

The entry should demonstrate the potential for scalability and replicability of the innovation. It should showcase how the innovation can be adapted and implemented in different policing contexts or jurisdictions, allowing for wider adoption and potential impact across the law enforcement community.

Officer Well-being and Safety:

The entry should demonstrate a commitment to officer well-being and safety through the innovation. It should showcase how the innovation has improved officer safety, mental health support, wellness programs, or other initiatives that enhance the overall well-being of law enforcement personnel.

Adaptability and Future Readiness:

The entry should demonstrate the innovation's adaptability to evolving challenges and technological advancements. It should showcase the ability to anticipate future needs and incorporate flexibility to accommodate changes in policing requirements or emerging trends.

Evidence-Based Approach:

The entry should demonstrate the use of evidence-based practices and data-driven decision-making in developing the innovation. It should showcase how research, data analysis, or empirical evidence has informed the design, implementation, and evaluation of the innovation.

Collaboration with Communities:

The entry should demonstrate meaningful engagement and collaboration with the communities served by the policing organization. It should showcase how the innovation incorporates community input, addresses community needs, and builds trust and cooperation between law enforcement and the public.

Training and Capacity Building:

The entry should highlight efforts to provide training and capacity building related to the innovation. It should demonstrate how the innovation has been disseminated through training programs, knowledge sharing platforms, or other means to empower law enforcement personnel and enhance their skills and capabilities.

Documentation and Supporting Materials:

The entry should provide comprehensive documentation, including project summaries, case studies, testimonials, data analysis, and any other relevant supporting materials that validate the innovation's impact, effectiveness, and adherence to the entry criteria.

Eligibility:

Only officially appointed experts, consultants or advisors can enter.

Language:

The entry must be submitted in English language.

Entry Fee:

US\$ 60-00 (only if shortlisted).



Dates

Entries Closing Date:

01 Oct 2023

Shortlist Announcement:

01 Nov 2023

AWARDS CEREMONY:

22 Dec 2023

Entry Submissions to: management@accreduawards.com
Website: www.accreduawards.com



ACCREDU AWARDS



ACCREDU

Woman Achievement Police Woman of the Year Award



Criteria

Leadership and Mentoring:

The nominee should have shown strong leadership qualities and the ability to inspire and mentor others within the law enforcement community. They should have demonstrated a commitment to fostering a supportive and inclusive environment, empowering their colleagues, and promoting professional development.

Community Engagement:

The nominee should have actively engaged with the community, building trust, and establishing positive relationships. They should have shown a dedication to understanding community needs, addressing concerns, and implementing initiatives that enhance public safety and improve the quality of life for residents.

Overcoming Challenges:

The nominee should have overcome significant challenges or adversity in their career and demonstrated resilience, determination, and a positive attitude in the face of obstacles. They should serve as a role model for others, inspiring confidence and perseverance.

Professional Development and Training:

The nominee should have shown a commitment to continuous professional development and staying abreast of emerging trends, technologies, and best practices in law enforcement. They should have pursued training opportunities and sought to expand their knowledge and skills.

Recognition and Awards:

The nominee should have received recognition and awards for their exceptional performance and contributions to the field of law enforcement. This can include departmental awards, community honors, or other forms of acknowledgement for their outstanding work.

Collaboration and Teamwork:

The nominee should have demonstrated the ability to work effectively as part of a team, collaborating with colleagues, community partners, and other agencies to achieve common goals. They should have shown a willingness to share knowledge, support others, and foster a spirit of cooperation.

Integrity and Ethics:

The nominee should embody the highest standards of integrity, ethics, and professionalism in their conduct. They should demonstrate a commitment to upholding the law, maintaining public trust, and serving as a role model for ethical behavior.

Supporting Materials:

The nomination should include supporting materials such as letters of recommendation, performance evaluations, commendations, community testimonials, and any other relevant documentation that showcases the nominee's qualifications and accomplishments.

Language:

The entry must be submitted in English language.

Entry Fee:

US\$ 60-00 (only if shortlisted).



Dates

Entries Closing Date:

01 Oct 2023

Shortlist Announcement:

01 Nov 2023

AWARDS CEREMONY:

22 Dec 2023

Entry Submissions to: management@accreduawards.com

Website: www.accreduawards.com